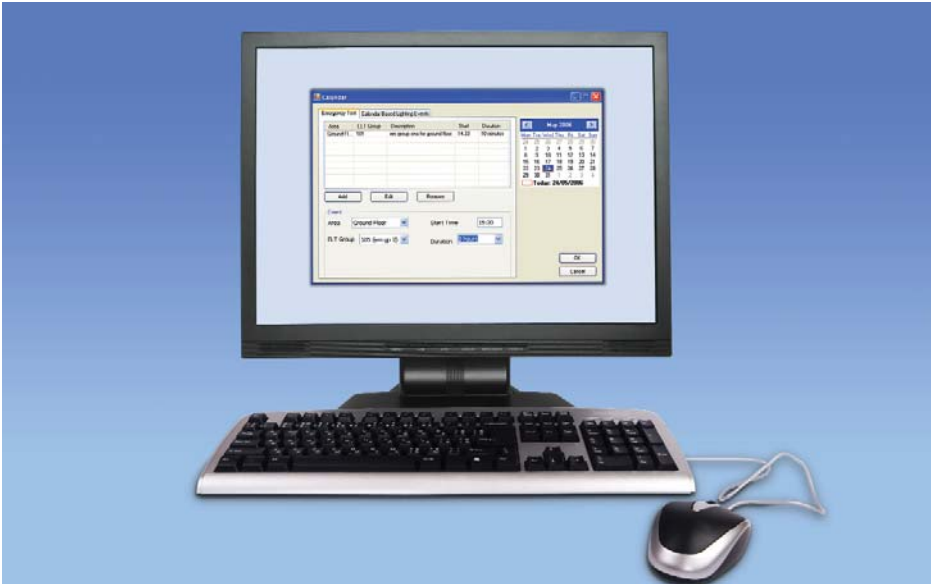


# Dali Emergency Monitoring

3.2



For emergency monitoring, the system uses the TridonicAtco EM PRO® DALI inverter which is fitted into the emergency light fitting along with the ballast, and a battery pack. The monitoring is carried out via a 2 wire DALI control cable which is part of the standard luminaire lead which runs back to the local LCM output in a six core cable.

## Features

- Lamp and ballast tested every few minutes on all fittings to ensure presence, communications, and detect lamp fault.
- Test schedule set using Calendar screen on Rapid Front End – typically monthly for short functional test, six monthly for 1hr test, and after three years, annual 3hr test.
- The user is allowed to decide when “time of least risk” when choosing date and time of test using Calendar screen.
- LCM runs test on outputs where EM Pros detected, and reports results.
- Rapid Front End shows pass/fail status of emergency fittings – and can diagnose... Lamp failure, Ballast failure, Dali pair short circuit, Comms failure (previously present emergency ballast now absent), Battery pack open circuit, Battery pack no longer fully chargeable.
- System ensures that duration tests only commence when battery is fully charged.
- No DALI address set up routine required, normal Rapid addressing scheme used.
- Keyswitch method of test still available for manual test.