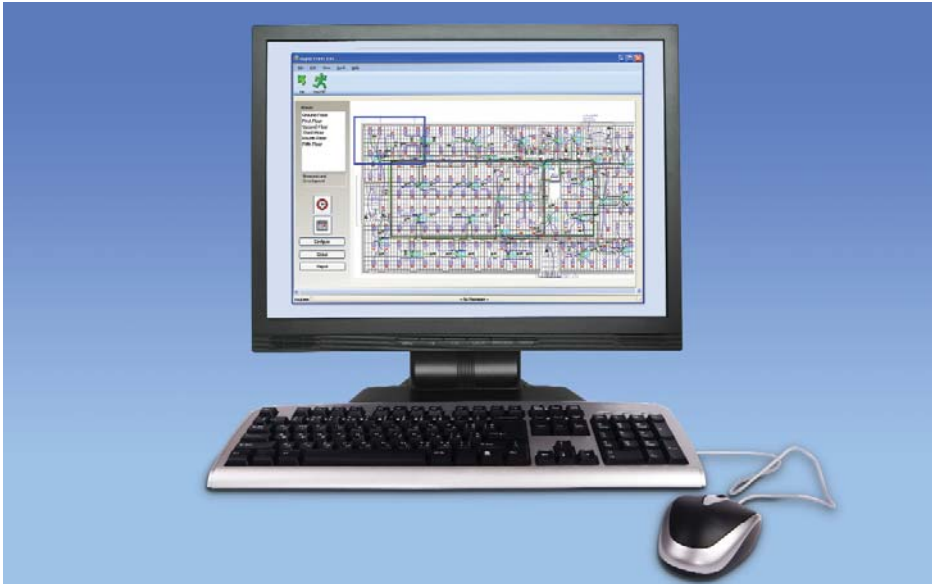


# Lighting Control Head End Graphics

3.1



The Intelligent Solution's Rapid Graphical Interface is designed to provide the user flexible control of the lighting from a PC, which provides visual information regarding the state of the lighting within that particular project.

Bitmaps of the building, floors or particular areas of the building can be illustrated for all control devices which are graphically depicted as icons both on the floor layout and in drop down windows within the Microsoft Windows® operating system.

Changes can be made to the ID's of all devices, LCM's, PIR's, Scene Set Plates and Daylight Sensors.

Status feed back is provided for all devices as to their status.

Changes can be made to lighting groups via soft wiring, thus negating the need for physical changes within the ceiling void.

Time settings for PIR's, Corridor and group hold delays can be set to the clients requirements. An event Calendar provides the client with the ability to schedule lighting control events for special occasions, cleaning, re-lamping and emergency testing of lights.

Lamp error status feed back is reported for any luminaire which are controlled by a DALI ballast.