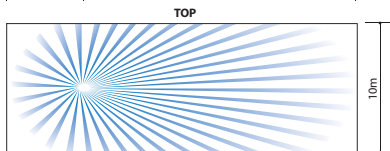
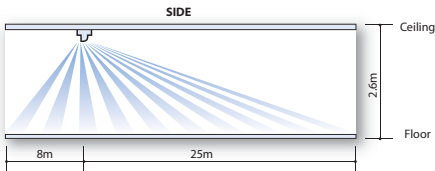
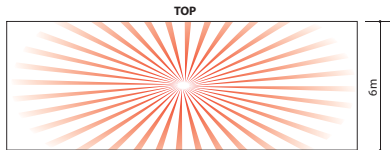
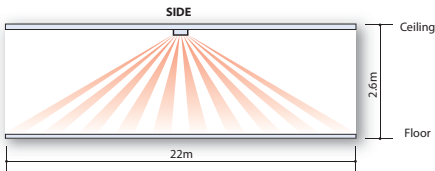
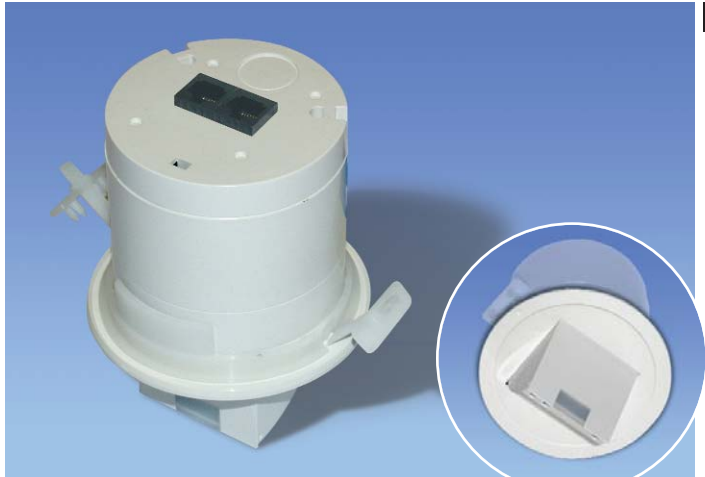
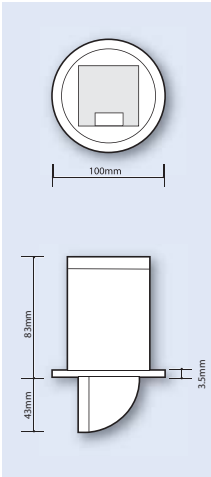


Microwave

6.2



The MWS3 microwave presence detectors are designed to provide automatic control of lighting, heating or ventilation loads. The MWS3 detects movement using a highly sensitive microwave detector. This works by emitting low power microwave signals and measuring the reflections as the signals bounce off moving objects. The MWS3 has a unique adjustable sensor head that allows the area of detection to be optimised for the application. When movement is detected the load is turned on. When an area is no longer occupied the load will switch off after an adjustable time out period.

An internal light sensor provides additional energy saving in lighting applications. When an area is occupied lighting is only switched on when the level natural light is below a preset level.

An integral IR sensor in the unit allows the lux settings to be changed and sensor to be overridden using a remote control handset (part no: UHS).

The MWS3 is available as a mains voltage sensor or as part of the Rapid system.
IS-MMWS3 – Mains 220-240V AC
IS-CMWS3 – Rapid System